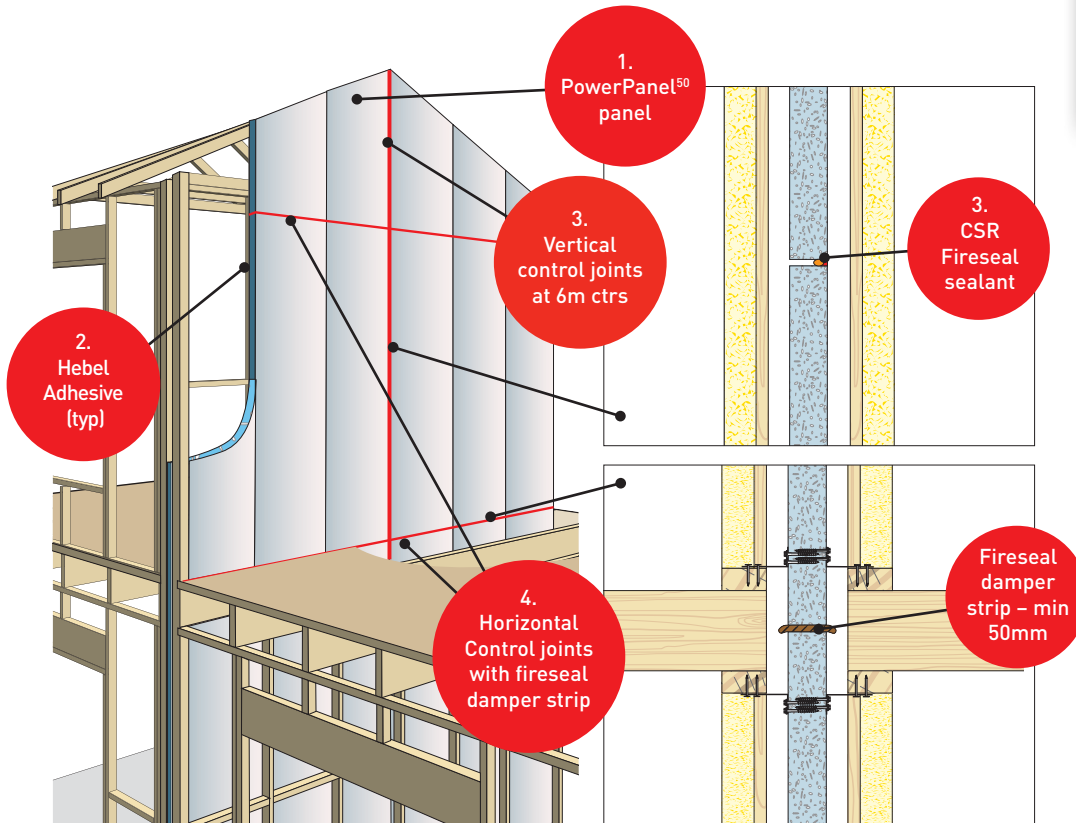


# HEBEL POWERPANEL<sup>50</sup> INTERTENANCY WALL SYSTEMS

SIMPLE AND EASY TO INSTALL. CODEMARK FOR EASY COMPLIANCE



Hebel PowerPanel<sup>50</sup> has been developed and tested for low rise multi-residential intertenancy wall systems, which are warranted by CSR.



- NOT DAMAGED BY WEATHER DURING INSTALLATION
- STRONG AND SOLID
- QUALITY AND SPEED
- ENERGY EFFICIENT
- ECO-FRIENDLY
- NOISE REDUCTION
- FIRE RESISTANT
- PROVEN

## POWERPANEL<sup>50</sup> INTERTENANCY / PARTY WALL

The PowerPanel<sup>50</sup> Intertency Wall System consists of 50mm thick steel reinforced AAC panels installed vertically to timber or steel frame. Uses aluminium wall brackets for discontinuous construction and Hebel deflection head track for base connection.

- **Fire rating:** Up to 90/90/90 when subjected to an external fire source
- **Acoustic (70mm studs):**  $R_w + C_{tr}$  29 to 50 for 228 - 236mm wall system thickness
- **Acoustic (90mm studs):**  $R_w + C_{tr}$  31 to 52 for 268 - 276mm wall system thickness

## POWERPANEL<sup>50</sup> STANDARD PANEL SIZES

50mm thick x 600mm wide x 2400mm, 2700mm and 3000mm long.

## POWERPANEL<sup>50</sup> INTERTENANCY / PARTY WALLS - LOW RISE MULTI RESIDENTIAL

- Fast and easy system to install
- Easy to fire-rate with no need for fire-rated plasterboard between floor levels at joists and in roof space
- Narrow system wall width - starting at 230mm - with 70mm separation between stud frames across all systems
- Simple system componentry maximises construction efficiency
- Panels up to 3 metres in height installed vertically
- Easy to cut PowerPanel<sup>50</sup> panels onsite
- PowerPanel<sup>50</sup> wall construction not affected by wet or damp conditions
- Minimal onsite waste
- Environmentally responsible building material

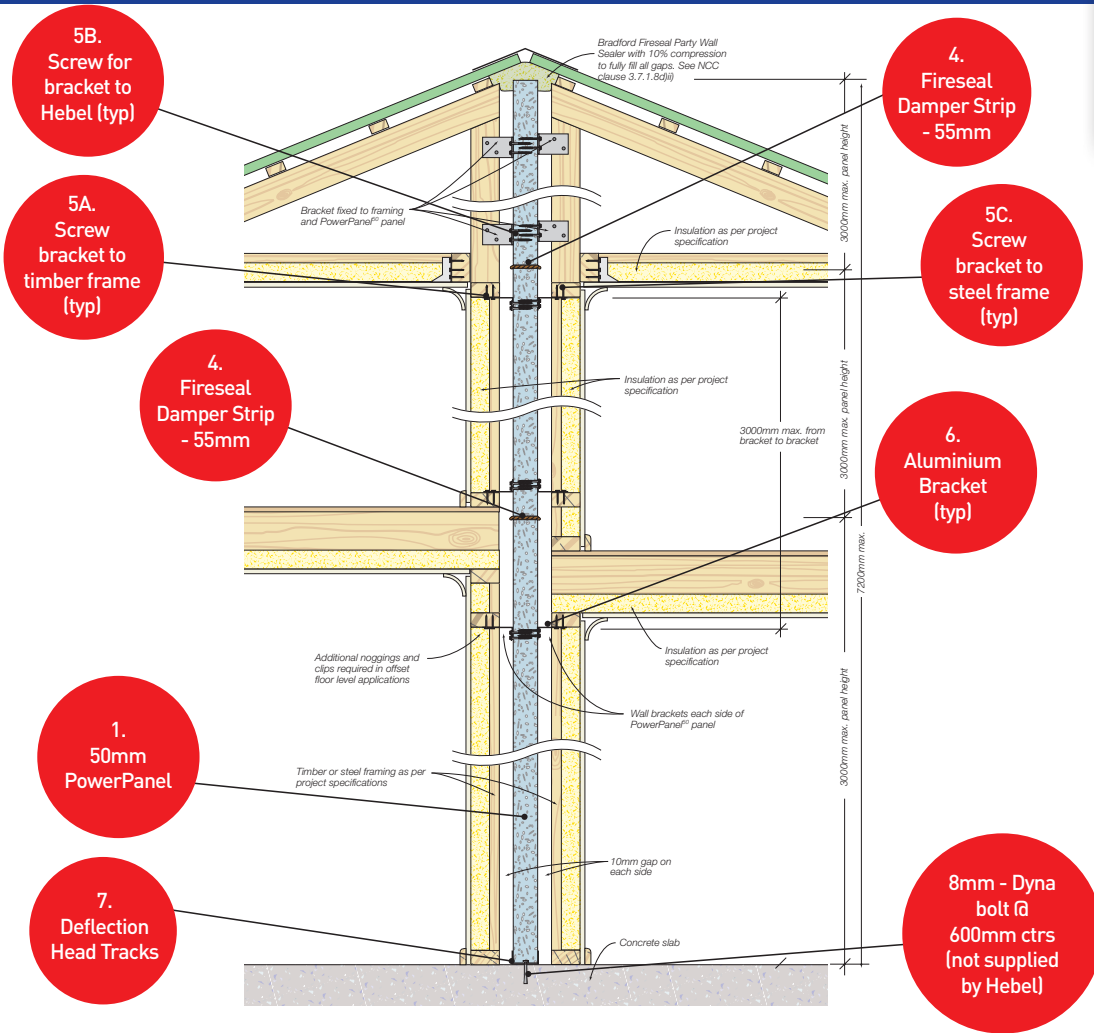


[www.hebel.com.au](http://www.hebel.com.au)

**CSR**

# HEBEL POWERPANEL<sup>50</sup> INTERTENANCY WALL SYSTEMS

SIMPLE AND EASY TO INSTALL. CODEMARK FOR EASY COMPLIANCE



ITEM	DESCRIPTION	LOCATION
1	Hebel PowerPanel <sup>50</sup>	Entire wall area
2	Hebel Adhesive	All panel joints (except control joints)
3	CSR FireSeal for vertical control joint	6m maximum ctrs along length of wall
4	Bradford fireseal damper strip	Horizontal control joints between panels
5A	Screw 12 - 11 x 35mm Hex Head type 17 / bracket	Fixing Aluminium Bracket to timber frame
5B	Screw 12 - 11 x 35mm Hex Head type 17 / bracket	Fixing Aluminium Bracket to Hebel
5C	Screw 10 - 16 x 16mm Hex Head self drilling / bracket	Fixing Aluminium Bracket to steel frame
6	Aluminium Brackets (75 x 50 x 40mm)	Ground floor panels Panels on upper level & between trusses
7	Deflection Head Track (3m lengths)	Only at base of wall

For more information contact 1300 369 448 [www.hebel.com.au](http://www.hebel.com.au)



HELI1710CT18